

Menin Antibody
Rabbit mAb
Catalog # AP91375

Specification

Menin Antibody - Product Information

Application **WB, IHC, ICC, IP**
Primary Accession **[O00255](#)**
Clonality **Monoclonal**

Other Names

MEA1; Men1; Menin; Multiple Endocrine Adenomatosis 1; Multiple Endocrine Neoplasia 1; SCG2; Suppressor Candidate Gene 2; Wermer syndrome; ZES;

Isotype **Rabbit IgG**
Host **Rabbit**
Calculated MW **68023 Da**

Menin Antibody - Additional Information

Dilution **WB~~1:1000
IHC~~1:100~500
ICC~~N/A
IP~~N/A**

Purification **Affinity-chromatography**
Immunogen **A synthesized peptide derived from human Menin**

Description **Menin, the protein product of the MEN1 gene, is a component of the mixed-lineage leukemia protein (MLL)-containing histone methyltransferase complex that facilitates methylation of histone H3 Lys4 to promote transcriptional activation. Menin functions to suppress proliferation of pancreatic islet cells, at least in part through MLL-mediated activation of the p18INK4c (p18) and p27CIP/KIP (p27) cyclin-dependent kinase inhibitor genes. Rabbit IgG in phosphate buffered saline , pH 7.4, 150mM NaCl, 0.02% sodium azide and 50% glycerol. Store at +4°C short term. Store at -20°C long term. Avoid freeze / thaw cycle.**

Storage Condition and Buffer

Menin Antibody - Protein Information

Name MEN1

Synonyms SCG2

Function

Essential component of a MLL/SET1 histone methyltransferase (HMT) complex, a complex that specifically methylates 'Lys-4' of histone H3 (H3K4). Functions as a transcriptional regulator. Binds to the TERT promoter and represses telomerase expression. Plays a role in TGFB1-mediated inhibition of cell-proliferation, possibly regulating SMAD3 transcriptional activity. Represses JUND-mediated transcriptional activation on AP1 sites, as well as that mediated by NFkB subunit RELA. Positively regulates HOXC8 and HOXC6 gene expression. May be involved in normal hematopoiesis through the activation of HOXA9 expression (By similarity). May be involved in DNA repair.

Cellular Location

Nucleus. Note=Concentrated in nuclear body-like structures. Relocates to the nuclear matrix upon gamma irradiation

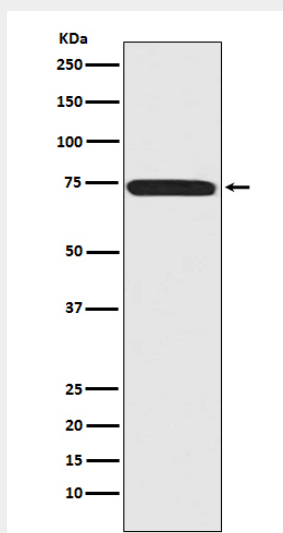
Tissue Location

Ubiquitous.

Menin Antibody - Protocols

Provided below are standard protocols that you may find useful for product applications.

- [Western Blot](#)
- [Blocking Peptides](#)
- [Dot Blot](#)
- [Immunohistochemistry](#)
- [Immunofluorescence](#)
- [Immunoprecipitation](#)
- [Flow Cytometry](#)
- [Cell Culture](#)

Menin Antibody - Images

Western blot analysis of Menin expression in 293T cell lysate.